

GROVE COTTAGES @ ATRIA WEST

ATRIAWEST.COM



10669-10685 SANTA MONICA BLVD

 CUSHMAN &
WAKEFIELD

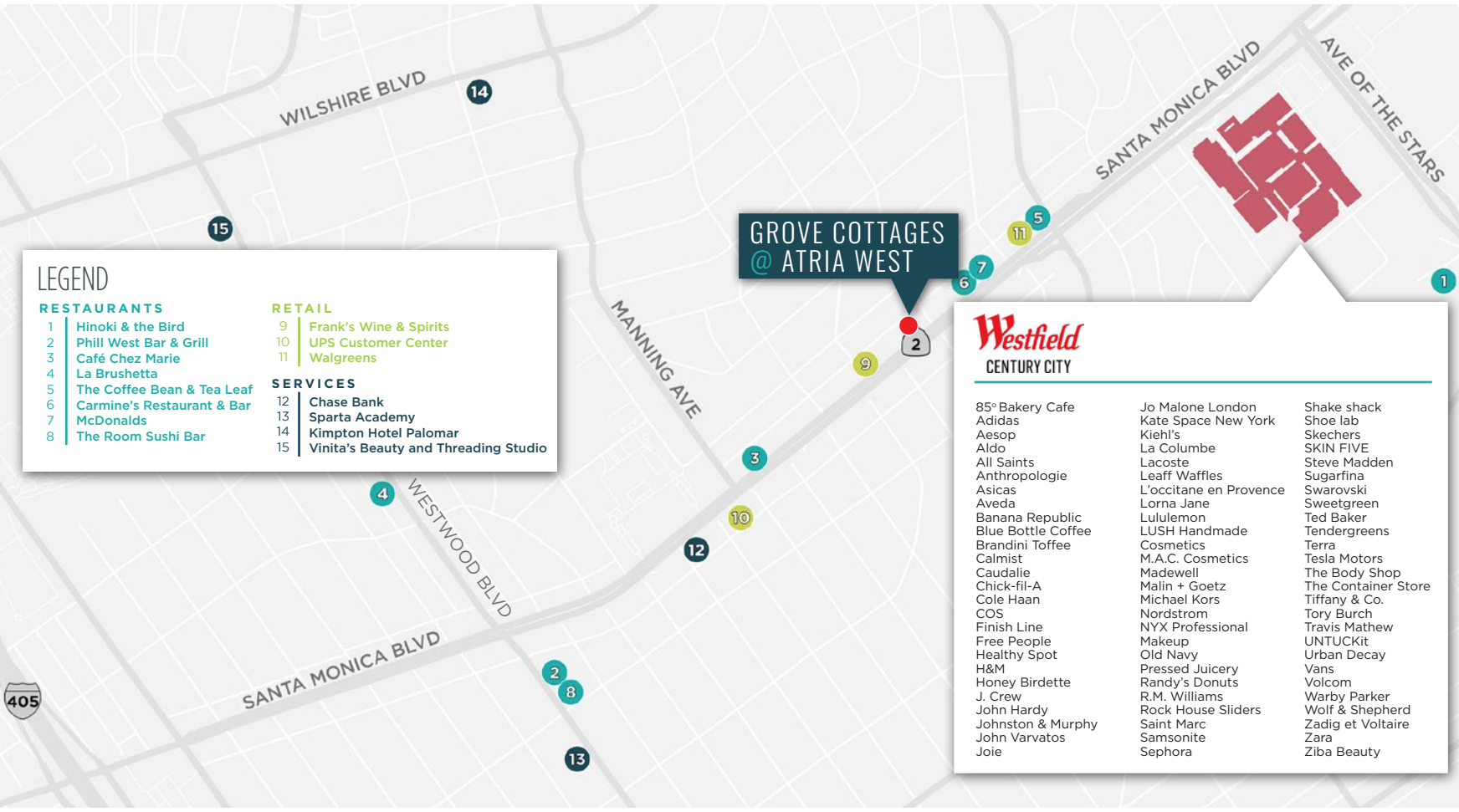
 onni[®]
group

GROVE COTTAGES @ ATRIA WEST

BUILDING FEATURES

- Unique historical creative bungalow style offices
- Spaces feature wood floors, exposed wood beams, operable windows and double height spaces
- Private, charming courtyard area with cobblestone walkways and sitting areas
- Access to class A amenities at Atria West including tenant gym, locker rooms, lounge and conference center
- Tenant identity signage in front of each cottage
- 3/1000 parking onsite
- Direct access to Café Chez Marie www.cafechezmarie.com

GROVE COTTAGES @ ATRIA WEST



LOCATION

Ideally located in the heart of West Los Angeles, the Grove Cottages @ Atria West is equidistant to Century City, Westwood and Beverly Hills.

Santa Monica is also a few miles away, along with its airports and beaches. 405 Freeway access just minutes along the recently completed and renovated Santa Monica Boulevard corridor, along with a myriad of amenities.



CUSHMAN & WAKEFIELD

onni group

GROVE COTTAGES @ ATRIA WEST

AVAILABILITIES

GROVE COTTAGES

10669-10685 SANTA MONICA BLVD

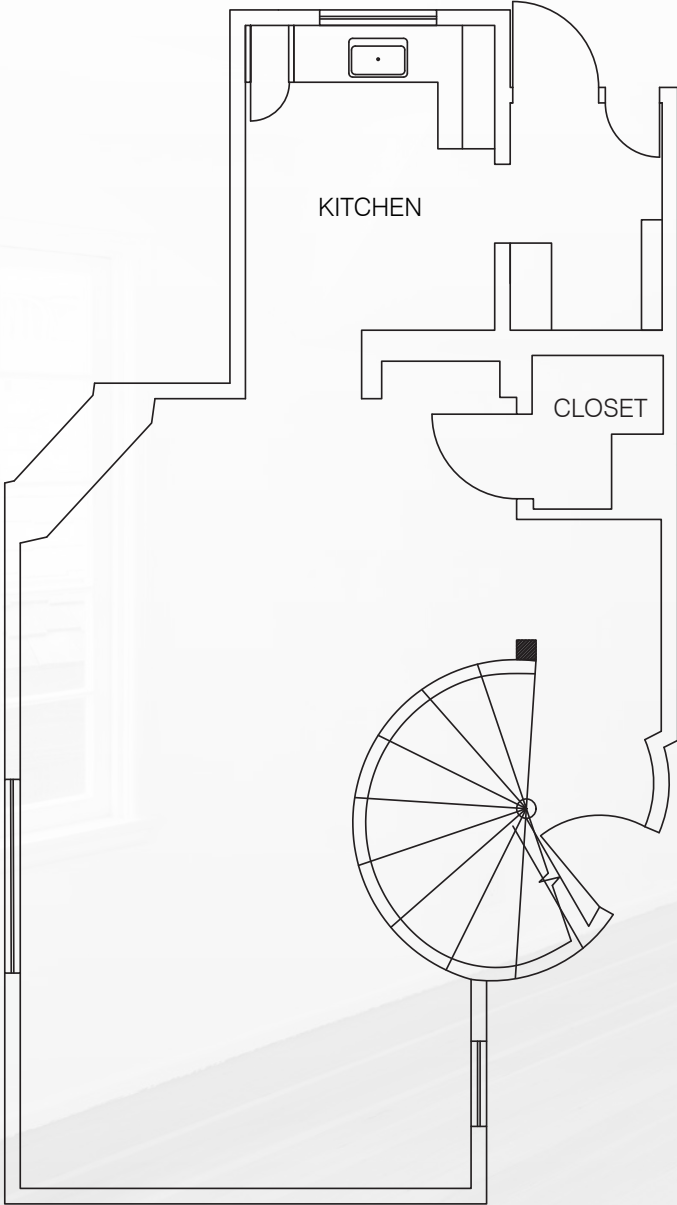
ADDRESS	RSF	DESCRIPTION
10675-A	1,383 SF	open work space, 3 offices/meeting rooms, kitchen
10685	1,638 SF	open work space, 2 office/meeting rooms, kitchen, private restroom



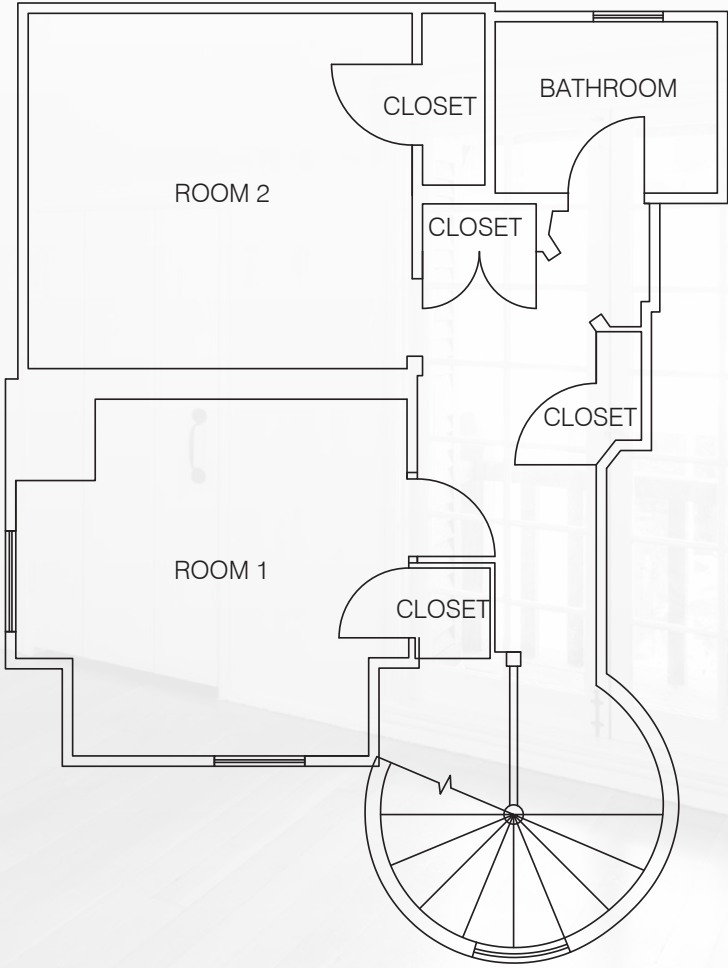
GROVE COTTAGES @ ATRIA WEST

10675-A SANTA MONICA BOULEVARD

1,638 RSF



FIRST FLOOR

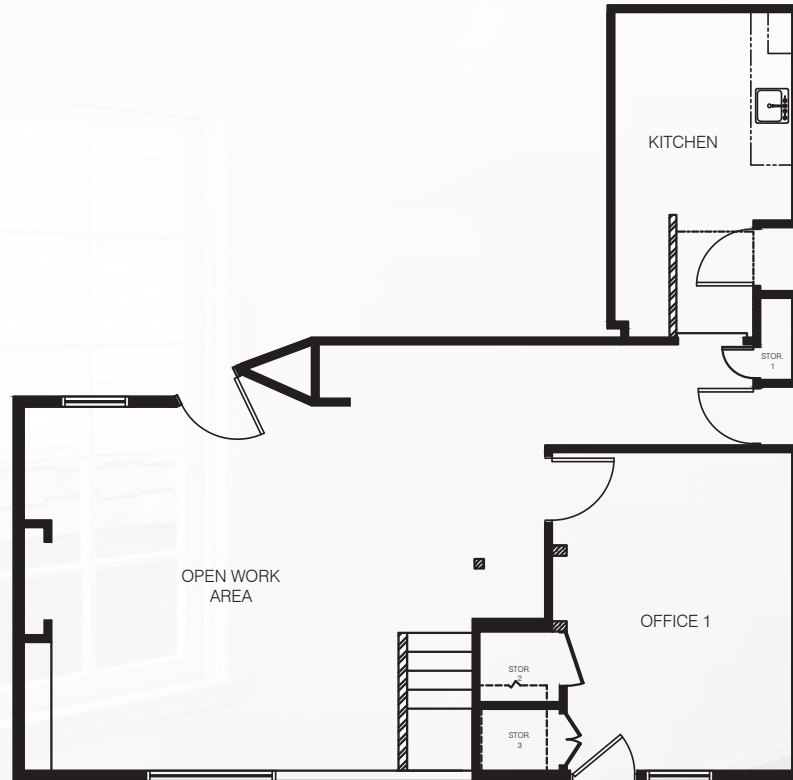


SECOND FLOOR

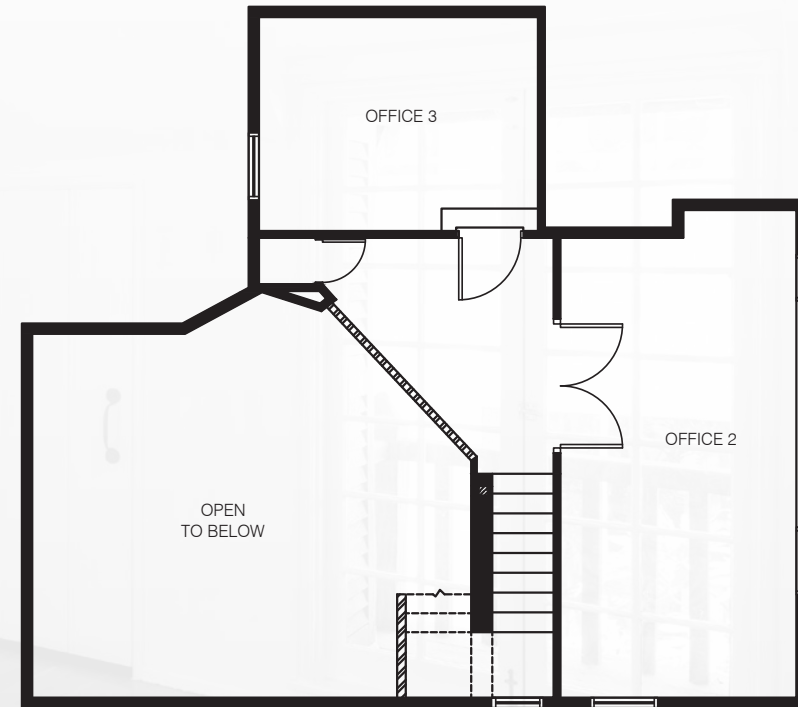
GROVE COTTAGES @ ATRIA WEST

10685-A SANTA MONICA BOULEVARD

1,383 RSF



First Floor



Second Floor

GROVE COTTAGES @ ATRIA WEST

LEASING

FOR MORE INFORMATION,
PLEASE CONTACT:

ANDREW D. TASHJIAN

Executive Director
+1 213 955 5148
andrew.tashjian@cushwake.com
CA Lic. 01867711

JOSH BERNSTEIN

Managing Director
+1 310 795 5947
josh.bernstein@cushwake.com
CA Lic. 01828093

©2020 Cushman & Wakefield. All rights reserved. The information contained in this communication is strictly confidential. This information has been obtained from sources believed to be reliable but has not been verified. NO WARRANTY OR REPRESENTATION, EXPRESS OR IMPLIED, IS MADE AS TO THE CONDITION OF THE PROPERTY (OR PROPERTIES) REFERENCED HEREIN OR AS TO THE ACCURACY OR COMPLETENESS OF THE INFORMATION CONTAINED HEREIN, AND SAME IS SUBMITTED SUBJECT TO ERRORS, OMISSIONS, CHANGE OF PRICE, RENTAL OR OTHER CONDITIONS, WITHDRAWAL WITHOUT NOTICE, AND TO ANY SPECIAL LISTING CONDITIONS IMPOSED BY THE PROPERTY OWNER(S). ANY PROJECTIONS, OPINIONS OR ESTIMATES ARE SUBJECT TO UNCERTAINTY AND DO NOT SIGNIFY CURRENT OR FUTURE PROPERTY PERFORMANCE.

